



ST3 Draft Plan public involvement

April 26, 2016



Input opportunities



Online survey

- 31,500 responses so far
- 10,000+ open-ended responses



Public meetings

- Seven meetings
- 1,000+ attendees so far



Written comments

- 2,000 so far

Over 50 community and jurisdictional meetings



Open houses

Events run April 19-28

April 19 – Ballard High School – 5:30 pm

April 21 – Evergreen State College – Tacoma - 5:30 pm

April 25 – Everett Station - 5:30 pm

April 26 – West Seattle High School - 5:30 pm

April 27 – Old Redmond School House Community Center - 5:30 pm

April 28 – Union Station – Seattle – 11:30 am

April 28 – Todd Beamer High School – Federal Way - 5:30 pm

Promoting participation

- District-wide mailer
- Online, print and TV advertising, including translated ads
- Social media (Facebook, Twitter)
- Email notifications
- Media coverage
- Jurisdictional and stakeholder briefings
- ST3 website

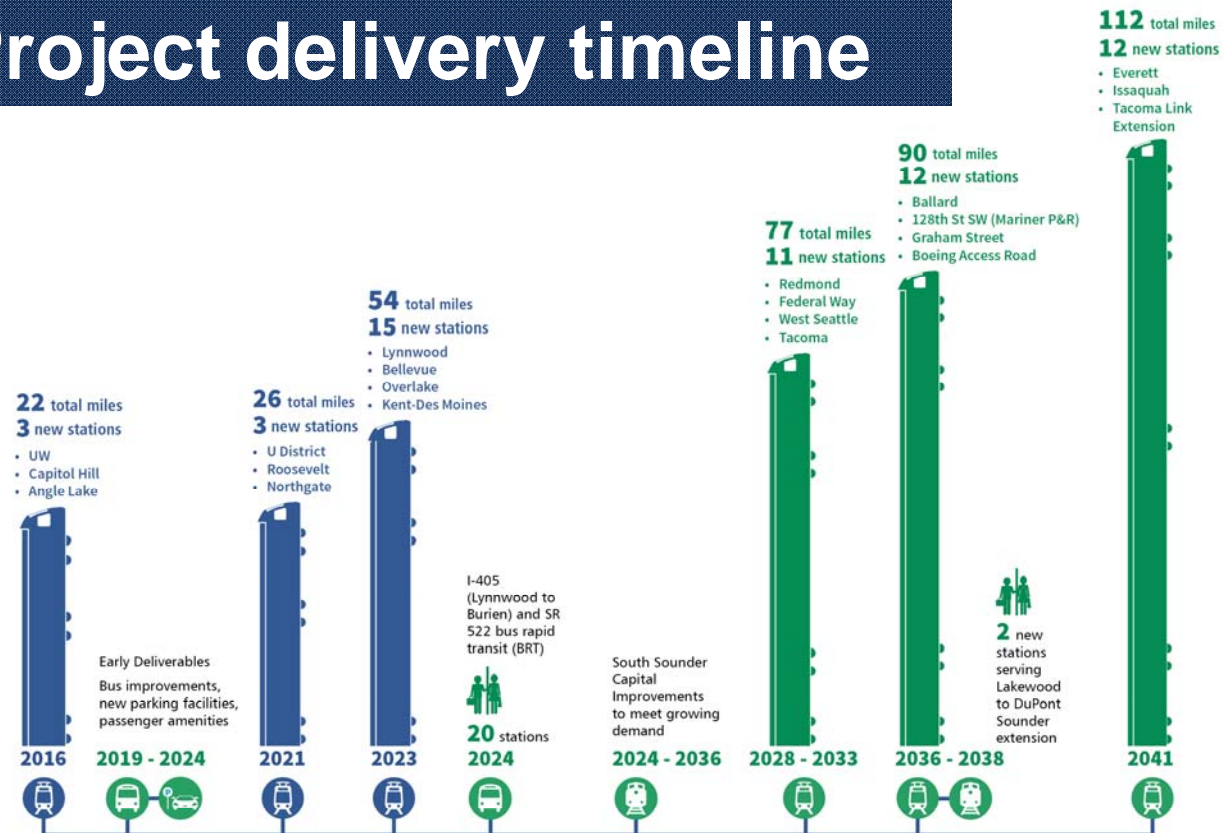




Major themes from Public Meetings

- How can projects be delivered faster?
- Questions regarding sub-area equity and finances
- Timeframe of the overall plan
- Inclusion of more studies and “next steps”
- Adjustments to particular projects
 - Service to Southwest Everett Industrial Center
 - Alignment through Interbay
 - I-405 BRT project elements and options for the Eastside Rail Corridor

Draft Plan: Project delivery timeline



*Note: not all ST3 Draft Plan projects shown on timeline

● Sound Transit 2 Projects ● Sound Transit 3 Draft Plan Projects

Reporting input to the Board

May 2 (extended from April 29)

- Public comment period ends

May 5 Executive Committee

- Initial public input report including survey results

May 26 Sound Transit Board

- Full report including analysis of written/open-ended comments



Board deliverables

- Memo summarizing prominent themes
- Survey topline
- Hard copies of jurisdictional and organization letters
- Flash drive containing:
 - All letters
 - Copies of all written comments
 - Spreadsheet with open-ended survey answers

